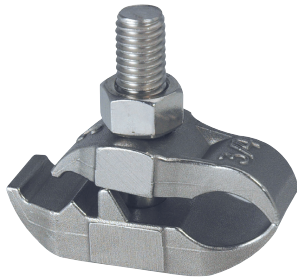


## TECHNICAL DATA SHEET

# Conduit Beam Clamps

## Parallel clamps, stainless steel

### Steel City®



Conduit beam stainless-steel beam clamps used for pipe and conduit

#### Features:

- For use with rigid and PVC-coated conduit.
- Use to mount pipe or conduit parallel to the flange of I-beams or channel easily without having to drill holes.
- Made from stainless-steel to help prevent corrosion.
- Easily installed using standard hand tools.
- Requires little maintenance or repair.
- Does not require touch up or paint.

#### Applications:

- Used to mount pipe or conduit.

#### Conforms to:

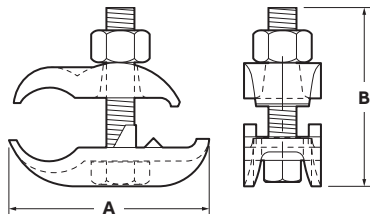
- ASTM A351
- ASTM F593

#### Material:

- Body and hardware made from 316 SS.

#### Product selection

##### Drawing



Part no:	Pipe/Rigid conduit size (inches)	Weight 100 (lbs)	A (inches)	B (inches)
PC3/4SS316	¾	58	2.88	2.53
PC1SS316	1	60	3.10	2.53

Note: Product must be installed in accordance with applicable national and local electrical codes.